



Porta d'Italia | Porte d'Italie



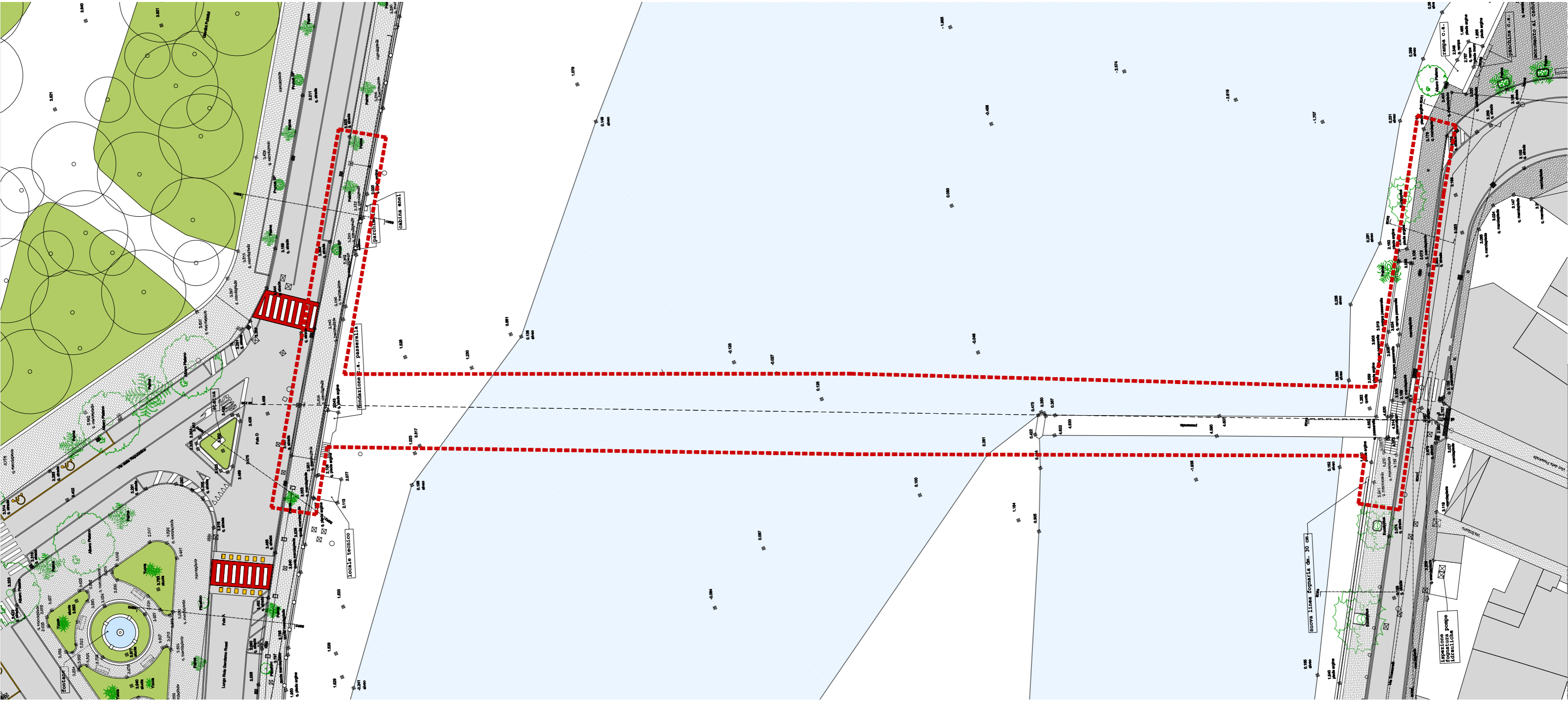
COMUNE DI
VENTIMIGLIA

PASSERELLA SUL FIUME ROJA

PROGETTO PER LA REALIZZAZIONE DI UNA PASSERELLA PEDONALE



STATO DI FATTO



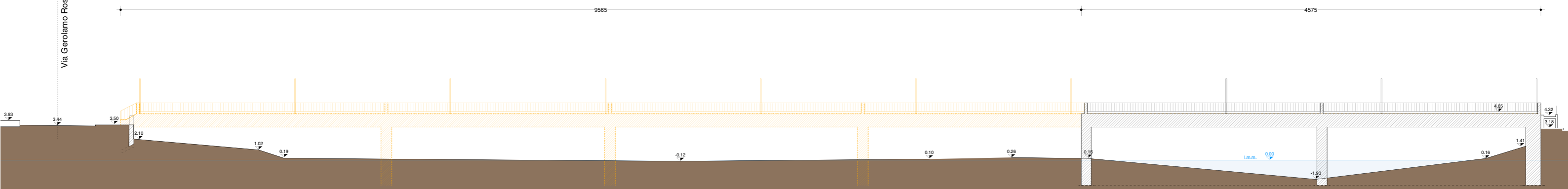
PASSERELLA SQUARCIAFICHI CROLLATA

9565

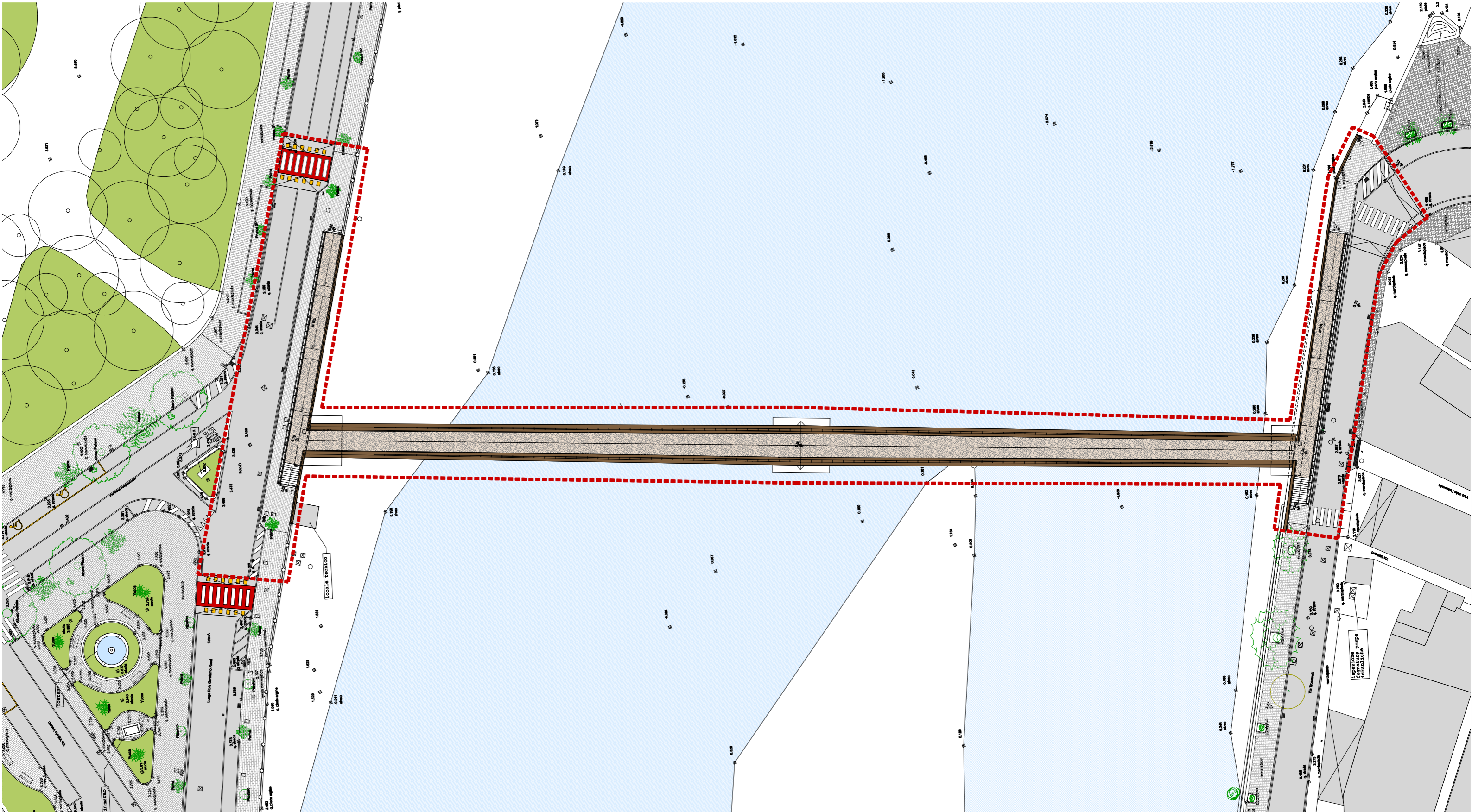
RESTI DELLA PASSERELLA SQUARCIAFICHI

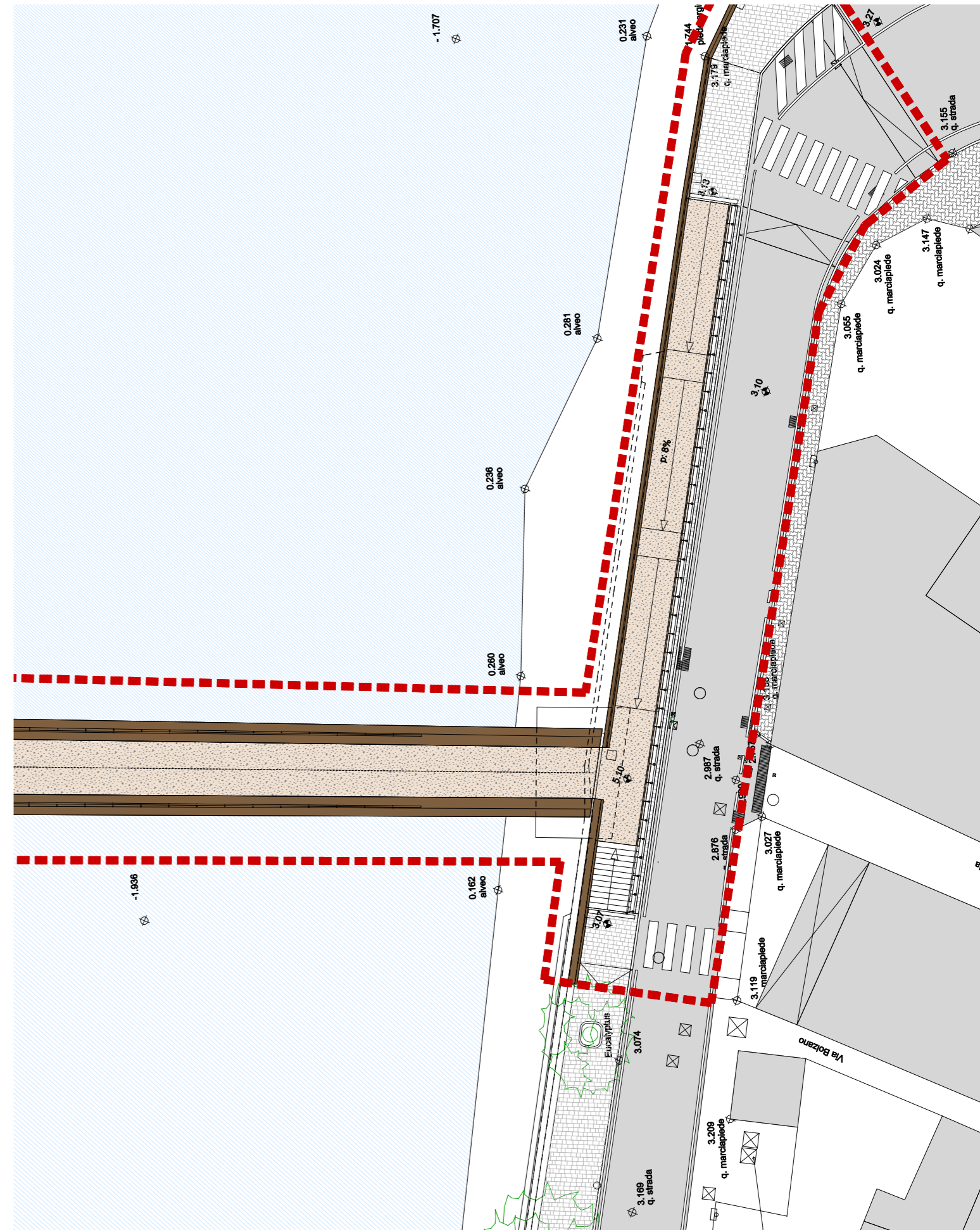
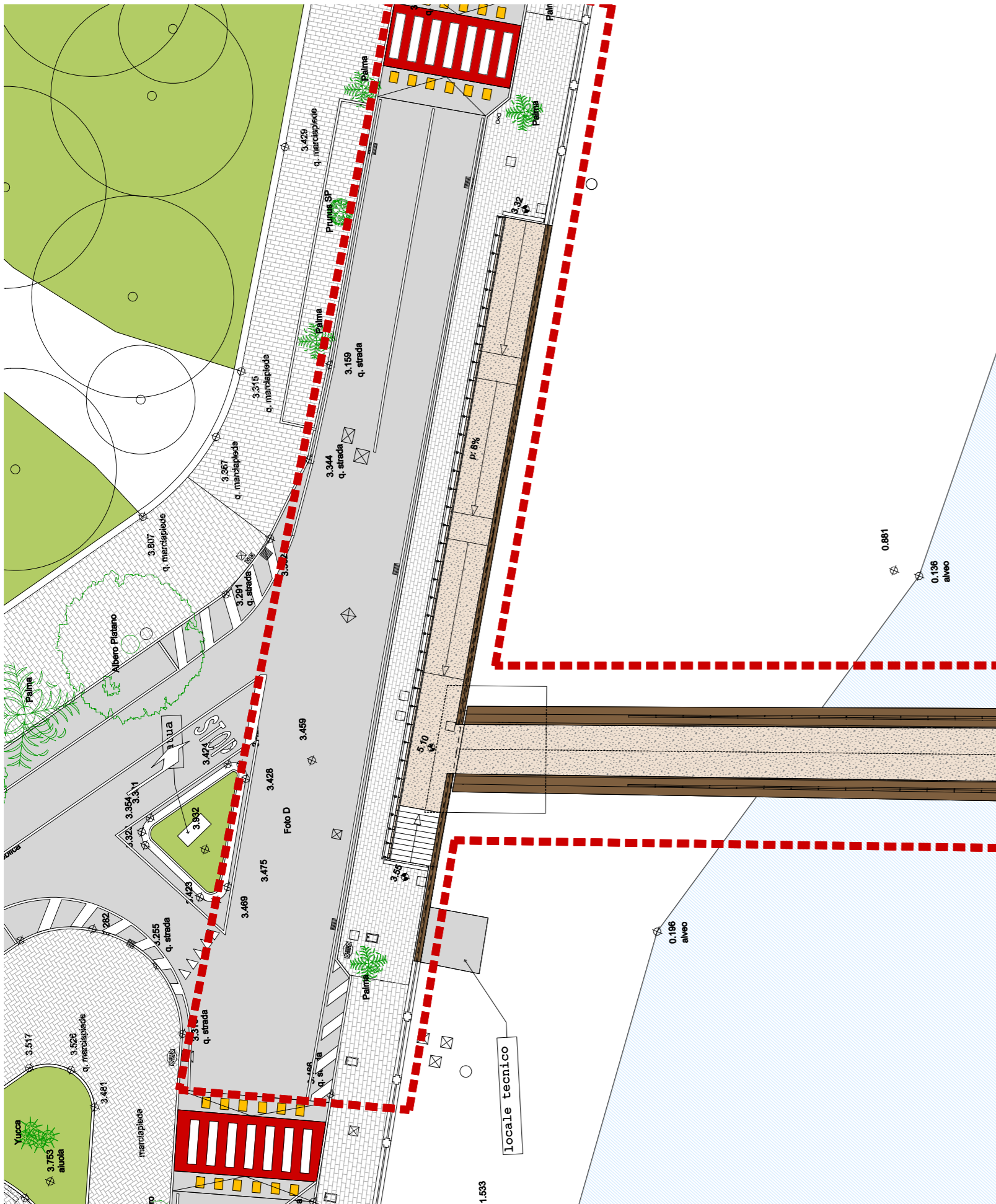
4575

Via Gerolamo Rossi



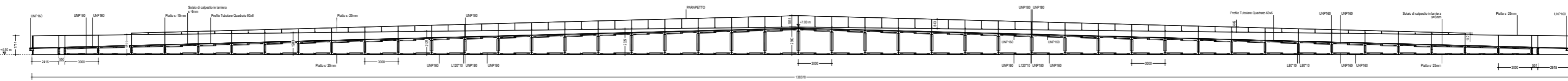
PROGETTO





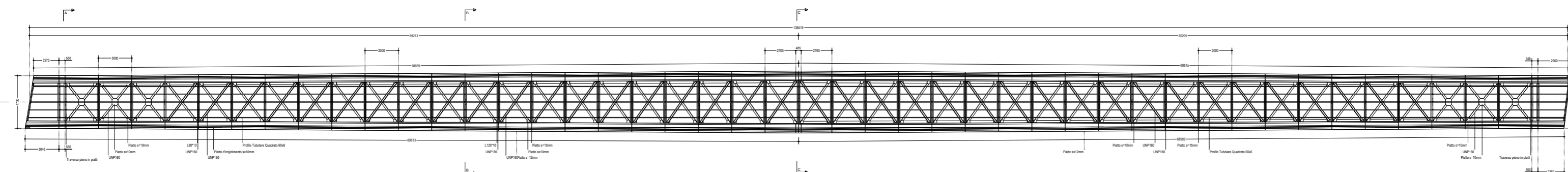
SEZIONE LONGITUDINALE

Scala 1:100



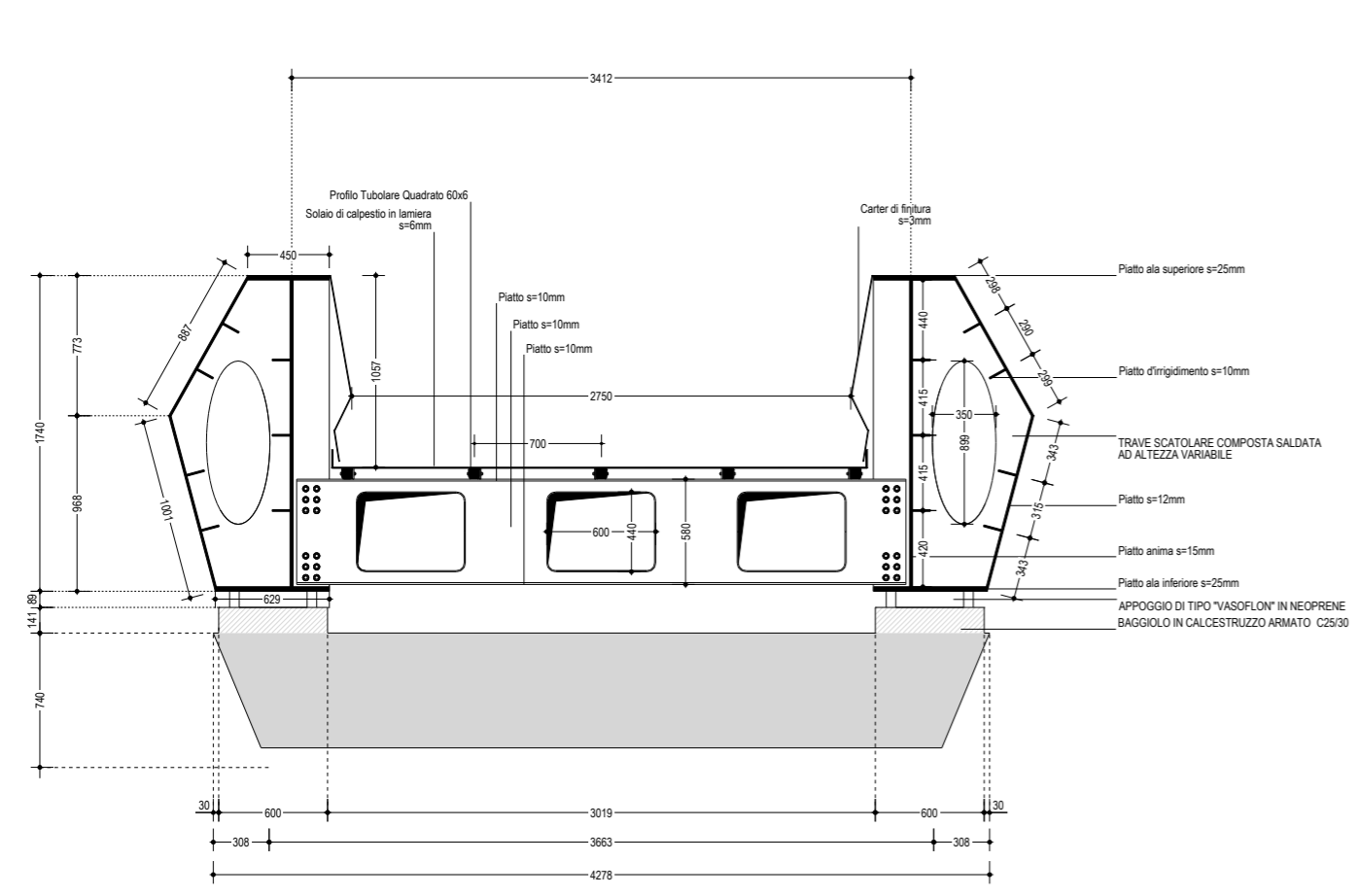
PIANTA PASSERELLA

Scala 1:100



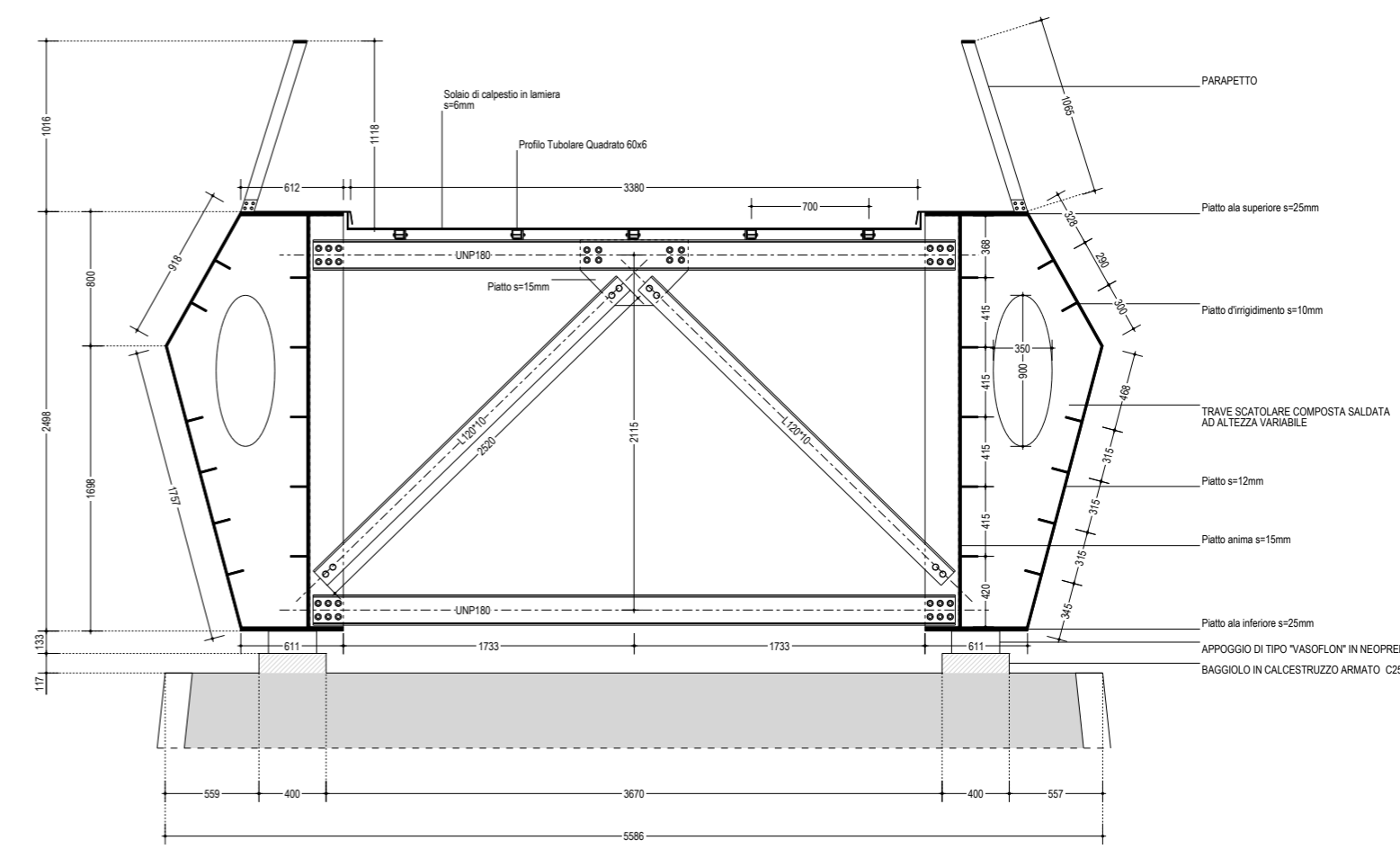
SEZIONE TRASVERSALE A-A : APPOGGIO

Scala 1:20



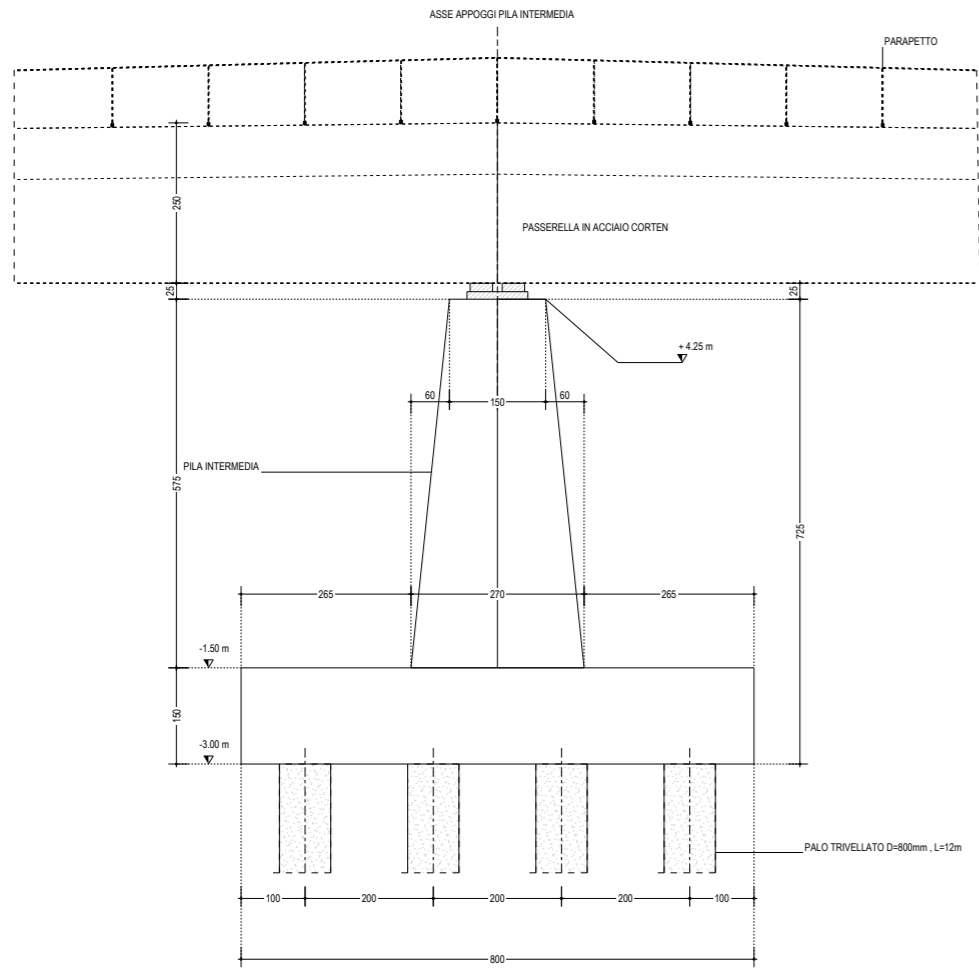
SEZIONE TRASVERSALE C-C : MEZZERIA

Scala 1:20

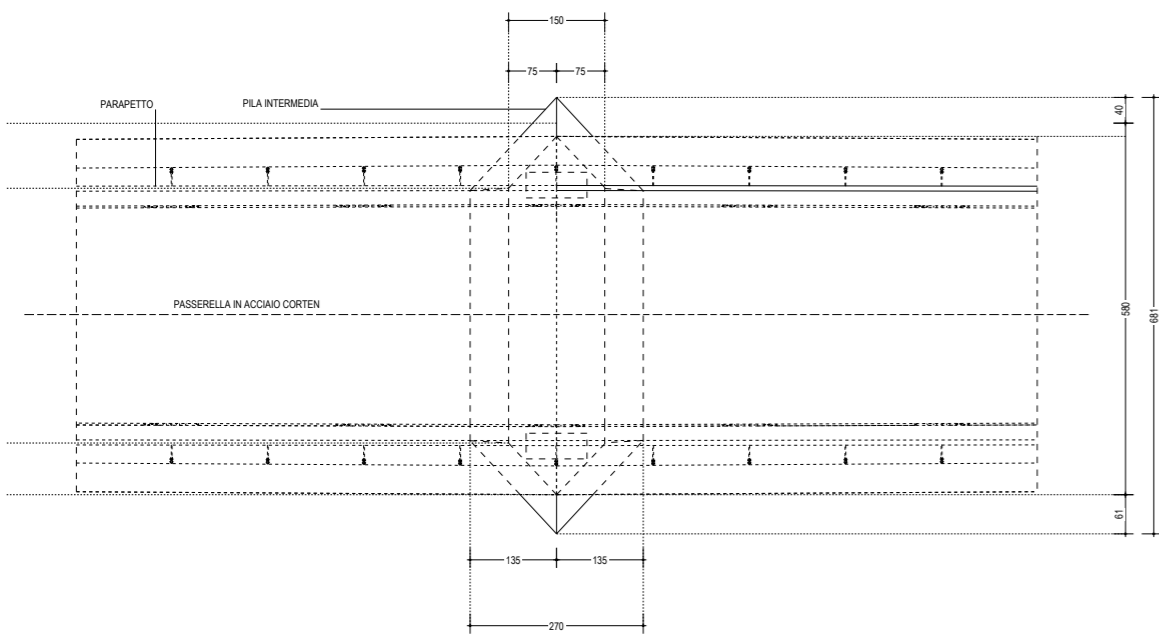


LA PILA CENTRALE

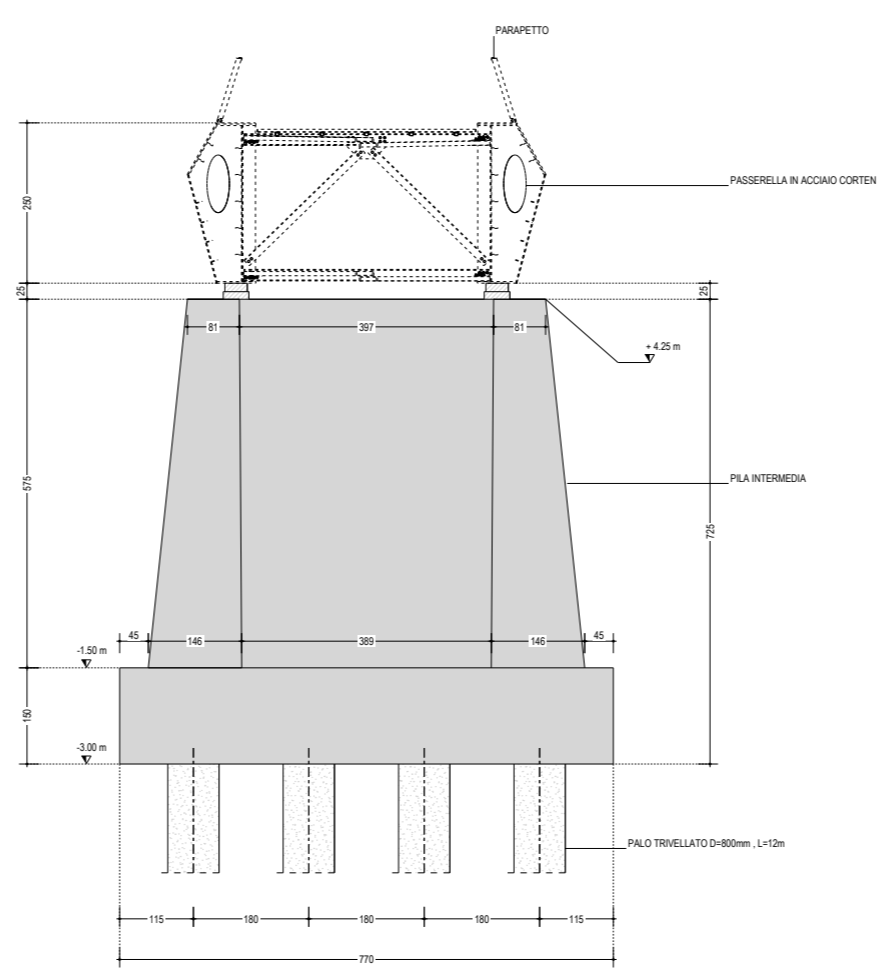
PROSPETTO LONGITUDINALE
Scala 1:50



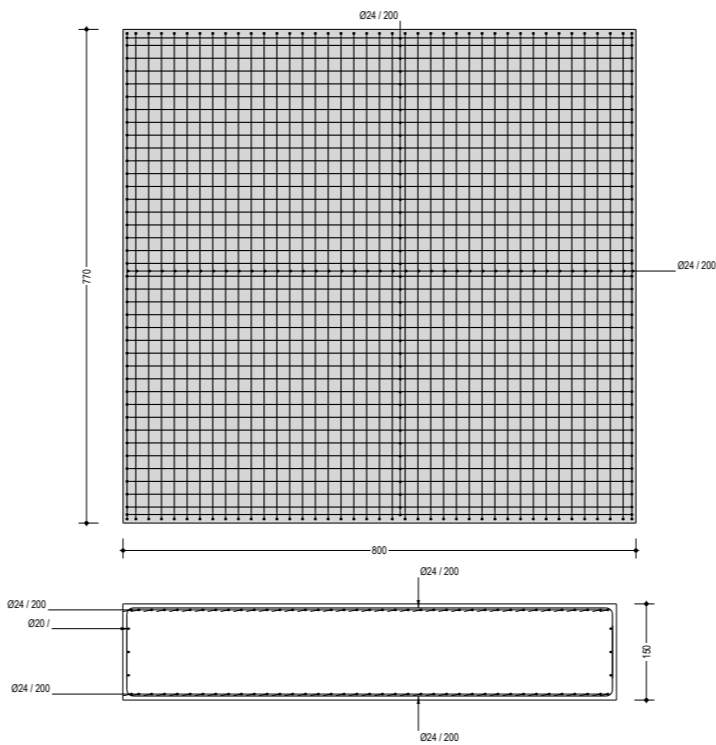
PIANTA
Scala 1:50



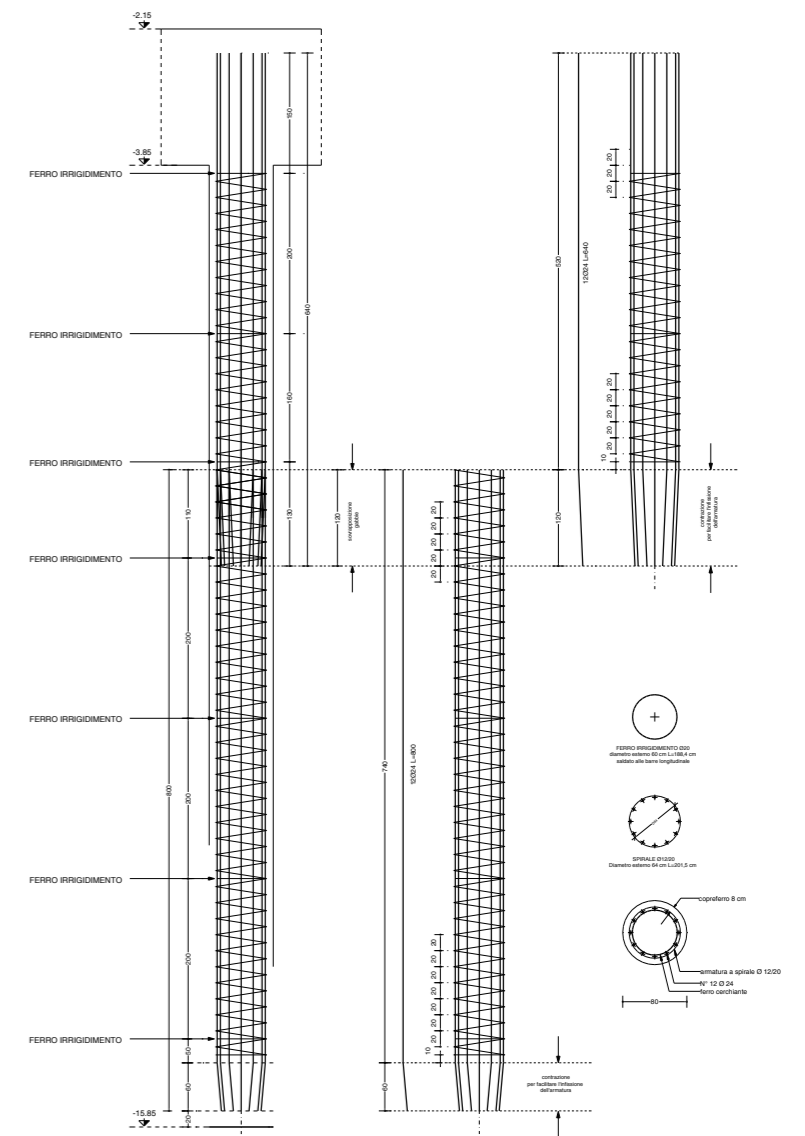
SEZIONE TRASVERSALE
Scala 1:50



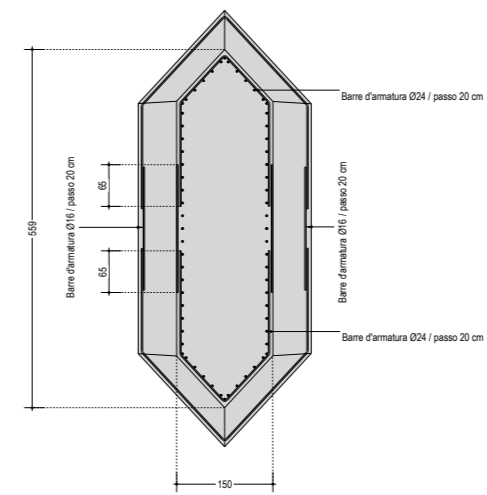
ARMATURA PLINTO DI FONDAZIONE



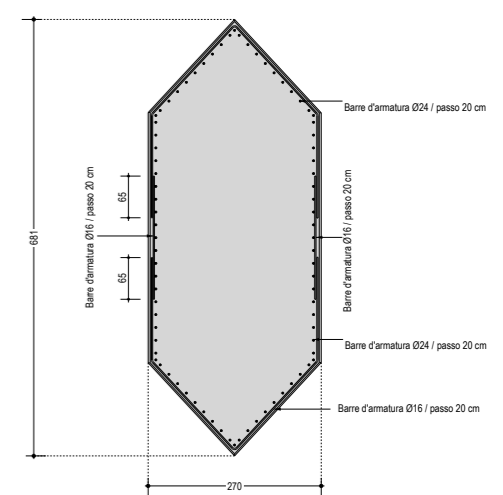
ARMATURA PALO DI FONDAZIONE



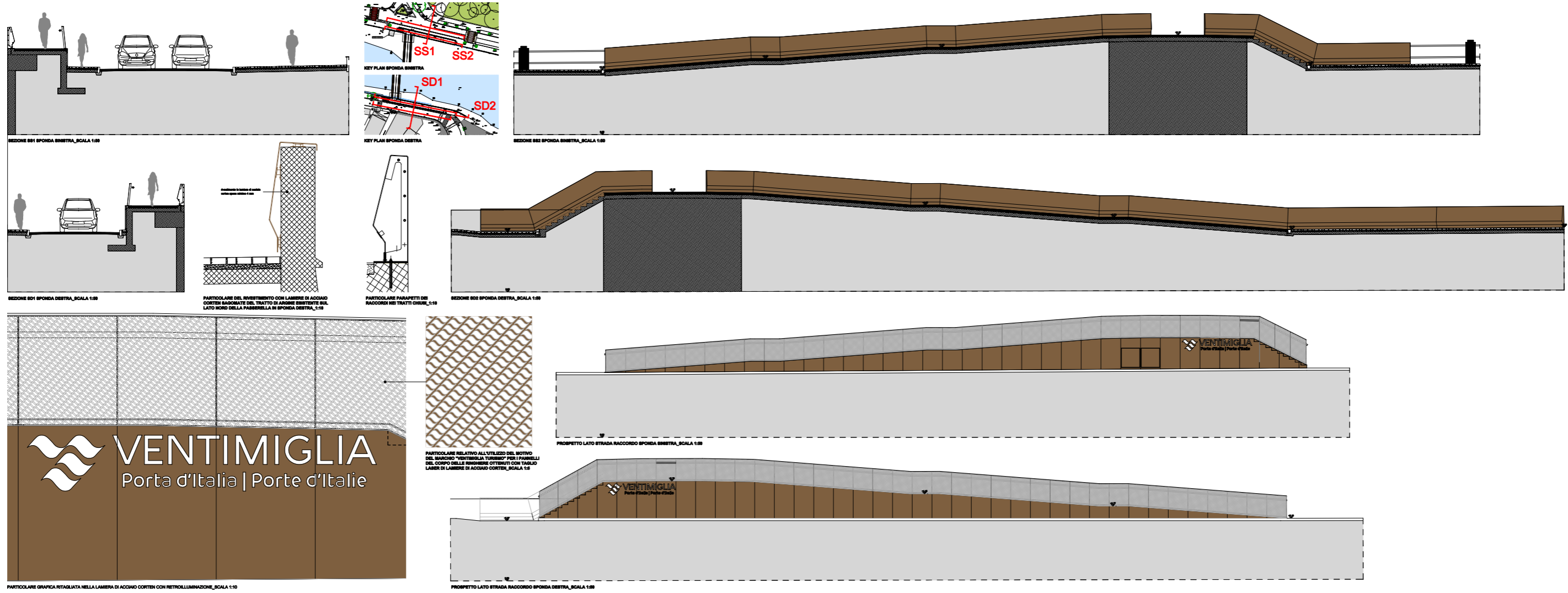
SEZIONE TRASVERSALE TESTA PILA - ARMATURA



SEZIONE TRASVERSALE PILA AL PIEDE - ARMATURA

























 **VENTIMIGLIA**
Porta d'Italia | Porte d'Italie



VENTIMIGLIA